



To Spit, or Not to Spit? Is DNA right for your research?

Sara Cochran www.theskeletonwhisperer.com
 theskeletonwhisperer@yahoo.com (951) 269 - 5460

Types of Tests:

Y-DNA – Traces the paternal lineage only. This test is for men only, results reach back up to 400-1000 years.

Y-Chromosome, mutates very slowly; so a match may be very recent, or be several generations back in your tree.

mtDNA – Traces the maternal lineage only. This test may be taken by men or women, results reach back up to 400-1000 years.

Mitochondrial DNA mutates even more slowly than Y-DNA; so a match may be very recent, or be many generations back in your tree.

Autosomal DNA – Traces both the paternal and maternal lineage. This test may be taken by men or women, and is effective in tracing your family up to about 6 generations.

Autosomal DNA is found in 22 pairs of DNA which do not determine the sex of the child; you inherit half of these chromosomes from Mom and half from Dad. Siblings **will not** inherit identical halves **unless** they are identical twins.

Each generation, the amount of Autosomal DNA you receive from each individual in the prior generations is reduced by about half.

Sharing DNA with a Family Member:

Compiled from page 27, *Family Tree Guide to DNA Testing and Genetic Genealogy*

Relationship:	Odds you share DNA:	Relationship:	Odds you share DNA:
Parent/Sibling, 1 st cousins	99% and up	Fourth Cousins	45-71%
Second Cousins	About 99%	Fifth Cousins	10-32%
Third Cousins	90-98%	Sixth Cousins	<5-11%

Testing Company Comparison:

Name	Types of Tests	Regular Price* Plus shipping <i>*As of Oct 2017</i>	Family Matches ?	Storage of Sample	Accepts Transfers?
Ancestry.com Spit kit	Autosomal	\$99	Yes	Yes, indefinitely	No
23 & Me Spit kit	Autosomal Autosomal + Health	\$99 \$199	Yes	Yes, indefinitely	No
MyHeritage Swab kit	Autosomal	\$99	Yes	Yes, indefinitely	Yes
LivingDNA Swab kit	3-in-1 for men 2-in-1 for women	\$159	No	Yes, indefinitely.	Yes
FtDNA Swab kit	Autosomal	\$89	Yes	Yes, 25 years minimum	Yes
FtDNA Swab kit	Y-DNA 37 Markers Y-DNA 67 Markers Y-DNA 117 Markers	\$169 \$268 \$359	Yes Yes Yes	Yes, 25 years minimum	Yes
FtDNA Swab kit	mtDNA Plus mtFull Sequence	\$79 \$199	Yes Yes	Yes, 25 years minimum	Yes



To Spit, or Not to Spit? Is DNA right for your research?

Sara Cochran www.theskeletonwhisperer.com
theskeletonwhisperer@yahoo.com (951) 269 - 5460

Your Results are Back! Now What?

Review your Ethnicity Matches

See if there are any close DNA matches you recognize!

Download your Raw DNA to your computer.

Upload to GedMatch

Upload to the other companies that take transfers

Online Resources & Tools:

International Society of Genetic Genealogy:

<https://isogg.org/>

https://isogg.org/wiki/Wiki_Welcome_Page

<http://blog.kittycooper.com/> Kitty Cooper's Blog.

<https://www.gedmatch.com/login1.php> Upload your test results to "meet" testers from other websites and dig deeper into your results with lots of tools. Free and paid levels.

<https://dnainter.com/tools/sharedcm> : Enter the amount of CM you share with a match and it will estimate the relationship. Free.

<https://www.promethease.com/> : Medical analysis of your autosomal test for a small fee.

<http://www.yourgeneticgenealogist.com/> CeCe Moore's blog.

Facebook Groups:

DNA For Genealogy: <https://www.facebook.com/groups/dna4genealogy/>

DNA Detectives: <https://www.facebook.com/groups/DNADetectives/>

The Irish DNA Registry: <https://www.facebook.com/groups/TheIrishDNARegistry/>

Books:

Emily D. Aulicino, *Genetic Genealogy: The Basics and Beyond* (Bloomington, Indian: Authorhouse, 2013).

Blaine T Bettinger, *The Family Tree Guide to DNA Testing and Genetic Genealogy* (Cincinnati, Ohio: Family Tree Books, 2016).

Blaine T Bettinger and Debbie Parker Wayne, *Genetic Genealogy in Practice* (Arlington, Virginia: National Genealogical Society, Inc, 2016).

David R. Dowell, *NextGen Genealogy: The DNA Connection* (Santa Barbara, California: Libraries Unlimited, 2014).

Contacting Matches:

When contacting individuals you found through GedMatch and Ancestry, be sure to include the information of which test you are asking about, either the kit number (GedMatch) or initials of the test taker (Ancestry). Many individuals manage multiple kits on these websites!

Provide places or surnames to give the other person somewhere to start looking for likely connections; or, a link to your public tree / Skeleton Tree.



To Spit, or Not to Spit? Is DNA right for your research?

Sara Cochran www.theskeletonwhisperer.com
theskeletonwhisperer@yahoo.com (951) 269 - 5460

Being Contacted by Matches:

Hopefully they have given you a little information, but if not, respond politely and ask for more information.

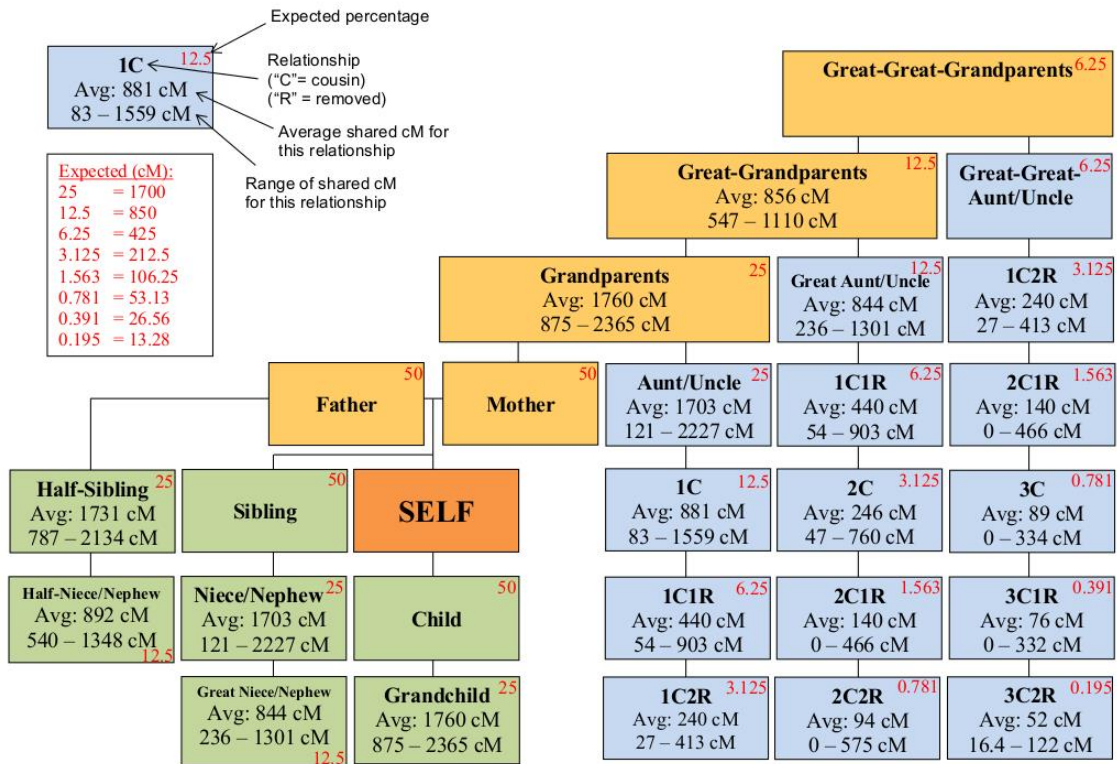
Remember, many people are searching for their biological parents and family. They may have much less information than you have to start with. Generally, they aren't looking to you to do their entire family tree! They are looking to you for new clues and places to look.

Please respond! Even if it's just to say, "I'm sorry, I don't think I can assist you right now."

Creating a Skeleton Tree:

Begin a new tree, starting with you, and enter the basic information about your lineal ancestors. Their names, birthdates, marriage and death dates and places are sufficient. For this tree, you can leave out the collateral relatives! Enter your pedigree chart data as far back as you can with confidence, and link your DNA to these trees. Remember, you can privatize information for living family members.

***This does not work on FamilySearch!



Blaine T. Bettinger – CC 4.0 Attribution License (2015)



Chart #

6 Generation Pedigree Chart

No. 1 on this chart is same as #___ on Chart #___.

The boxes by the male names may be filled in with a color or mark to indicate when all the work has been completed for that family.

